

MS 201

MS 201- This is suitable for wide range of applications, mainly suitable for high torques. This is also cost effective. If the application requires an accurate axial positioning, then these locking assemblies are not recommended.

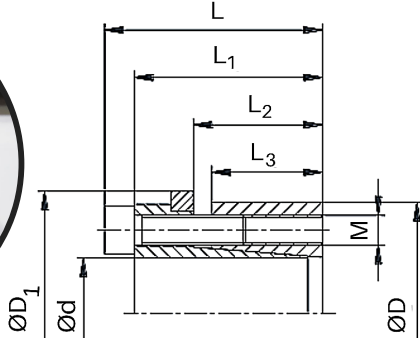
Centering - MS 201 is Self - Centering and hence additional hub centering is not required here.

Installation - Carefully clean the contact surface of the hub and the shaft. Later, apply a very thin layer of oil on both the surface. Insert the Locking Assembly fit into the hub and then push it on the shaft. Then tighten all the clamping screws in a crossed sequence using a torque wrench to reach the tightening torque T_A mentioned in the table below. The tightening torque of the clamping screws is verified in the same order of arrangement. In case of oil installation, please refer the columns T and F_{ax} in the table shown below.

Note : Do not use any oil/ grease that contains Molybdenum disulphide additive or high pressure additive or additives of Teflon and silicon. Avoid use of sliding grease or any sort of lubrication that reduces the coefficient of friction. In case the assembly of tapers is done without the use of oil then the figures in the table may differ.

Disassembly - Unscrew the clamped screws. Then insert the screws into the forcing threads in the crossed sequence and gradually tighten them until the rare cone ring is released. If the application is going to be used again, then repeat the lubrication process on both, the screws and the threads.

Axial Displacement - While tightening the screws, the hub does not have an axial movement towards the shaft.



MS 201

Size [mm]	Dimensions [mm]					Clamping screws DIN EN ISO 4762 - 12.9 $\mu_{\text{total}} = 0.14$				Transmittable torque or axial force	
	d x D	L	L ₁	L ₂	L ₃	D ₁	M	Length	Number z	T _A [Nm]	T [Nm]
20 x 47	48	42	31	26	53	M6	25	6	17	320	32
22 x 47	48	42	31	26	53	M6	25	6	17	360	33
24 x 50	48	42	31	26	56	M6	25	6	17	390	33
25 x 50	48	42	31	26	56	M6	25	6	17	400	32
28 x 55	48	42	31	26	61	M6	25	6	17	450	32
30 x 55	48	42	31	26	61	M6	25	6	17	490	33
32 x 60	48	42	31	26	66	M6	25	8	17	690	43
35 x 60	48	42	31	26	66	M6	25	8	17	750	43
38 x 65	48	42	31	26	71	M6	25	8	17	820	43
40 x 65	48	42	31	26	71	M6	25	8	17	860	43
42 x 75	59	51	35	30	81	M8	30	6	41	1300	62
45 x 75	59	51	35	30	81	M8	30	6	41	1400	62
48 x 80	59	51	35	30	86	M8	30	8	41	1900	79
50 x 80	59	51	35	30	86	M8	30	8	41	2000	80
55 x 85	59	51	35	30	91	M8	30	8	41	2200	80
60 x 90	59	51	35	30	96	M8	30	8	41	2400	80
65 x 95	59	51	35	30	101	M8	30	8	41	2600	80
70 x 110	71	61	46	40	119	M10	30	8	83	4600	131
75 x 115	71	61	46	40	124	M10	30	8	83	5000	133
80 x 120	71	61	46	40	129	M10	30	8	83	5200	130
85 x 125	71	61	46	40	134	M10	30	10	83	7000	165
90 x 130	71	61	46	40	139	M10	30	10	83	7400	164
95 x 135	71	61	46	40	144	M10	30	10	83	7800	164
100 x 145	80	68	52	45	155	M12	35	8	145	9800	196
110 x 155	80	68	52	45	165	M12	35	8	145	10700	195
120 x 165	80	68	52	45	175	M12	35	10	145	14600	243
130 x 180	80	68	52	45	188	M12	35	12	145	19000	292
140 x 190	90	76	58	50	199	M14	40	10	230	23000	329
150 x 200	90	76	58	50	209	M14	40	12	230	30000	400
160 x 210	90	76	58	50	219	M14	40	12	230	32000	400
170 x 225	90	76	58	50	234	M14	40	14	230	39000	459
180 x 235	90	76	58	50	244	M14	40	14	230	41000	456
190 x 250	90	76	58	50	259	M14	40	15	230	46400	488
200 x 260	90	76	58	50	269	M14	40	15	230	48800	488